

## ALUMAGUARD® LITE Flexible Weather-Proofing Jacket



**Alumaguard® Lite** flexible weather-proofing cladding from **Polyguard Products** is one of the family of **Alumaguard** cladding products that offers superior cold weather performance, ease of handling and application and true zero perm performance

- Meets ASTM E84 25/50 Smoke and Flame requirements (Silver smooth and embossed)
- Cold weather acrylic adhesive allows installation down to 10°F.
- High puncture and tear resistance
- Zero permeability
- Easy to install with no special tools required
- No pinning or activator required
- Excellent emissivity
- Available without adhesive for fabrication applications
- Available in bright white **Alumaguard® Cool Wrap** finish which meets California Title 24, CRRC and Energy Star requirements (see separate data sheet)

### Description

**Alumaguard Lite** is a multi-ply high strength composite membrane consisting of multiple layers of UV resistant foil and tough puncture resistant polymer. This multi-ply lamination is then coated with a proven cold weather acrylic adhesive to which is applied a heavy-duty kraft



liner that gives the membrane its peel and stick functionality.

### Uses

**Alumaguard Lite** is designed to be used outdoors to weather-proof exterior insulated ductwork, piping or other insulated tanks, vessels and equipment or indoors on pipe systems and ductwork where a true zero perm vapor barrier and durable outer jacket is required.

**Alumaguard® Lite** is not recommended on systems where heavy abuse is expected or on ammonia, brine or glycol systems where expansion and contraction could compromise the acrylic bond to the substrate. Refer to our technical bulletin on this issue. **Note: Prior to the installation of Alumaguard Lite, ducts must be sealed in accordance with SMACNA HVAC Duct Construction Standards Metal and Flexible, 3rd Edition (2005), Seal Class A.**

### Installation

**Alumaguard Lite** is a "peel and stick" product which must be applied to a properly prepared substrate. In duct applications, **Alumaguard Lite** can be used for the underside of the duct and does not require pinning. It is the recommended product to be used on the underside of the duct in **Alumaguard** applications.

**Alumaguard Lite** should only be applied to faced fiberglass or faced closed-cell foam insulation board.

Applying Alumaguard All-Weather to light density duct wrap is not recommended. Round or oval duct should be insulated with 3# or 6# pipe and tank wrap with appropriate facing.

### Packaging

**Alumaguard® Lite** is available in 3", 23" and 35.5" x 150' rolls packaged 16, 1 and 1 to a carton respectively. **Alumaguard Lite** is available in the following finishes: smooth silver, stucco embossed silver, and **Alumaguard® Cool Wrap** white.

### Limited Warranty

**Polyguard Products** warrants material to be free from leaks caused by defects in materials or manufacturing for a period of ten(10) years from the date of installation when material is applied according to installation instructions in effect at the time of installation. Contact **Polyguard** for complete details on the Limited Warranty.

### Alumaguard® Lite Technical Properties and Testing

Membrane Property	Test Method(ASTM)	Results
Total Product Thickness(w/o liner)	Micrometer	7 mils(Silver Smooth) 9 mils(Silver Embossed) 9 mils(Cool Wrap)
Water Vapor Permeance(perms)	E96, Procedure B	.00
Peel Adhesion(to primed steel)	D3330, Method A	62.4oz/in
Burst Resistance	D774	150 psi
Tensile Strength(Film only)	D882(Method B)	40 Lbs/in
Puncture Resistance	D1000	25 Lbs
Fungi Resistance	C1338	Pass
Lower Temperature Exposure	C1263	-40°F
High Temperature Exposure	C1263	+240°F
Dimensional Stability	D1204	<0.5%
Flame/Smoke	E84	Meets 25/50
Emissivity	C1371	.030
<b>Cool Wrap Properties &amp; Test Results</b>	<b>Solar Reflectance</b>	<b>Thermal Emittance</b>
Cool Roof Rating Council(CRRC)Initial	0.86	0.82
Cool Roof Rating Council(CRRC)3 Year	Pending	Pending
Energy Star 3 Year	0.84	0.78
California Title 24	Exceeds 0.75	Exceeds 0.75

**LEED® Point**

**Contributes to  
Energy  
Atmosphere (SA)  
Credit 1**

**Contributes to  
Indoor  
Environmental  
Quality (IEC)  
Credit 4.1**

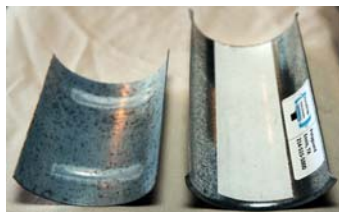
**VOC Content< 15  
g/l**

**Note: Before installing Alumaguard® Lite obtain a full set of installation instructions at [www.PolyguardProducts.com](http://www.PolyguardProducts.com) or by calling Polyguard at 800-541-4994 or by asking your local distributor or sales representative.**

**AlumaGlide™** gliding saddles are the perfect accompaniment for use with any dynamic piping system, two saddles; the top one adhered to the insulation jacketing, the bottom with a PTFE sheet on the inside of the saddle, and ribs to keep it in place on the pipe stand or hanger, allow for movement up to 4" of a pipe system, your support saddles move with the system! No more damaged jacketing or saddles falling out. See the **AlumaGlide™** data sheet for more specific information.



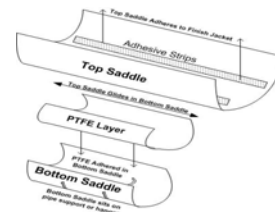
Standard Saddle



Two Piece Saddle



Stays in Hanger



Patented Glide System